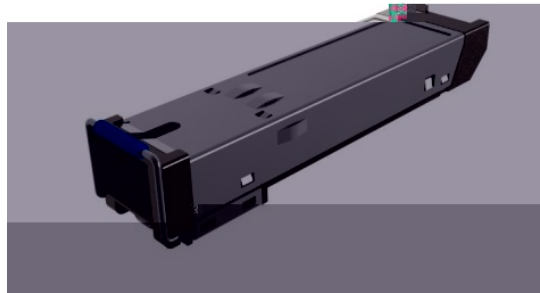


## GPON OLT Class B+



GPON OLT  
APD  
APC  
CID  
WDM  
1310nm SFP  
0 to 70°C  
SC  
+3.3V  
LVPECL  
LVTTTL  
LVTTTL  
Class 1  
EMI and EMC  
ESD

1490nm DFB  
class-1  
SD  
DDM  
1490nm DFB  
DFB  
CID

1310nm  
SD  
ONU  
DDM  
1310nm EMI EMC  
1490nm DFB (with WDM)

MAC

RoHs

Optical transceiver for Gigabit-capable Passive Optical Networks (GPON) Class B+ OLT side

ITU-T G.984.2 Class B+

Small Form-factor Pluggable (SFP) Transceiver MultiSource Agreement July 5, 2000

	V <sub>cc</sub>	V	3.135	3.3	3.465
	T <sub>op</sub>		0	-	70
( )		Mbps	-	2488.32	-
( )		Mbps	-	1244.16	-

Part No	Specification									Application Code
	Package	TX DataRate	Laser	Optical Power	Detector	RX DataRate	Sensitivity	Temp	Standrad	
RTXM167-522	SFP	2.488Gb/s	1490nm DFB	1.5~5dBm	APD	1.244Gb/s	<-28dBm	0~70°C	GPON OLT Class B+	CLASS B+

Ports Definition